



# THE WORLD AROUND US

FlashAcademy® lessons	Worksheets	Instructions
<ul style="list-style-type: none"> <li>• Beginner &gt; Geography &gt; Weather types I</li> <li>• Beginner &gt; Geography &gt; Climate types</li> </ul>	Geography – Climate Types	<p>Cut out and stick the weather pictures in the right climate. Use the pictures to explain the effects of climate change.</p> <p>★ Write a letter to persuade the government to help stop climate change.</p>
<ul style="list-style-type: none"> <li>• Beginner &gt; Geography &gt; Places on the planet</li> </ul>	Geography – Divisions of Earth	<p>Complete the crossword and label the divisions of earth on the map.</p> <p>★ Find out what the weather is like in different divisions of the Earth.</p>
<ul style="list-style-type: none"> <li>• Beginner &gt; Geography &gt; Human Geography</li> </ul>	Geography – Human Geography	<p>Cut out the words and match to the pictures. Use the word bank complete the texts.</p> <p>★ Find an example of each type of place. Make a fact-file about a city of your choice.</p>
<ul style="list-style-type: none"> <li>• Beginner &gt; Geography &gt; Rivers</li> </ul>	Geography – Rivers	<p>Label the features of a river. Match the pictures to the descriptions, then sort the features into the correct column.</p> <p>★ Imagine you go on a trip along a famous river. Write about what you see along its course.</p>
<ul style="list-style-type: none"> <li>• Beginner &gt; Geography &gt; Exploring the coastline</li> <li>• Intermediate &gt; Geography &gt; Travelling the coastline</li> </ul>	Geography – Exploring the coastline	<p>Label the features of the coastline, then match the pictures to the descriptions.</p> <p>★ Research the Jurassic Coast. Where is it? What can you see and do there?</p>
<ul style="list-style-type: none"> <li>• Beginner &gt; Geography &gt; World Oceans</li> </ul>	Geography – World Oceans	<p>Which oceans are the facts about? Sort into groups.</p> <p>★ How much plastic is there in the ocean? Make a poster to encourage people to protect the planet.</p>
<ul style="list-style-type: none"> <li>• Intermediate &gt; Citizenship &gt; Cultural diversity</li> </ul>	Challenges!	<p>Complete as many challenges as you can! Keep a vocabulary bank of new words you learn.</p> <p>★ Make a guide about life in the UK using what you've learned.</p>

# CLIMATE FEATURES

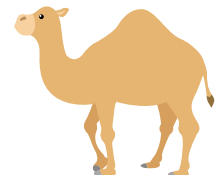
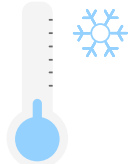
Geography  
Beginner (KS1/2)

tropical

temperate

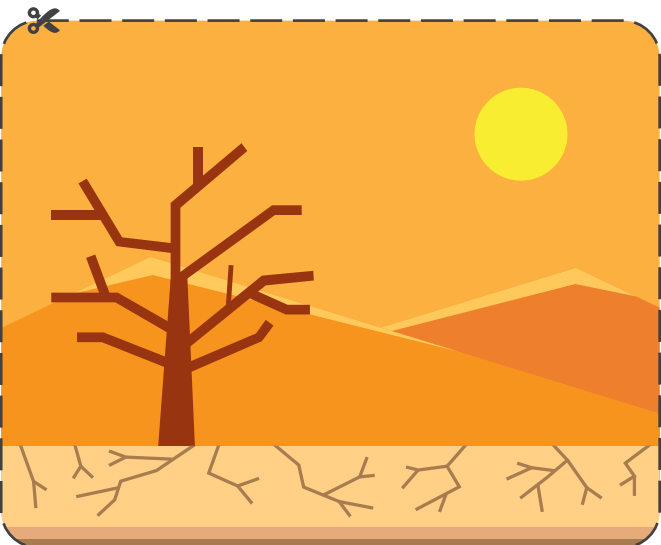
hot and dry

cold



# CLIMATE CHANGE

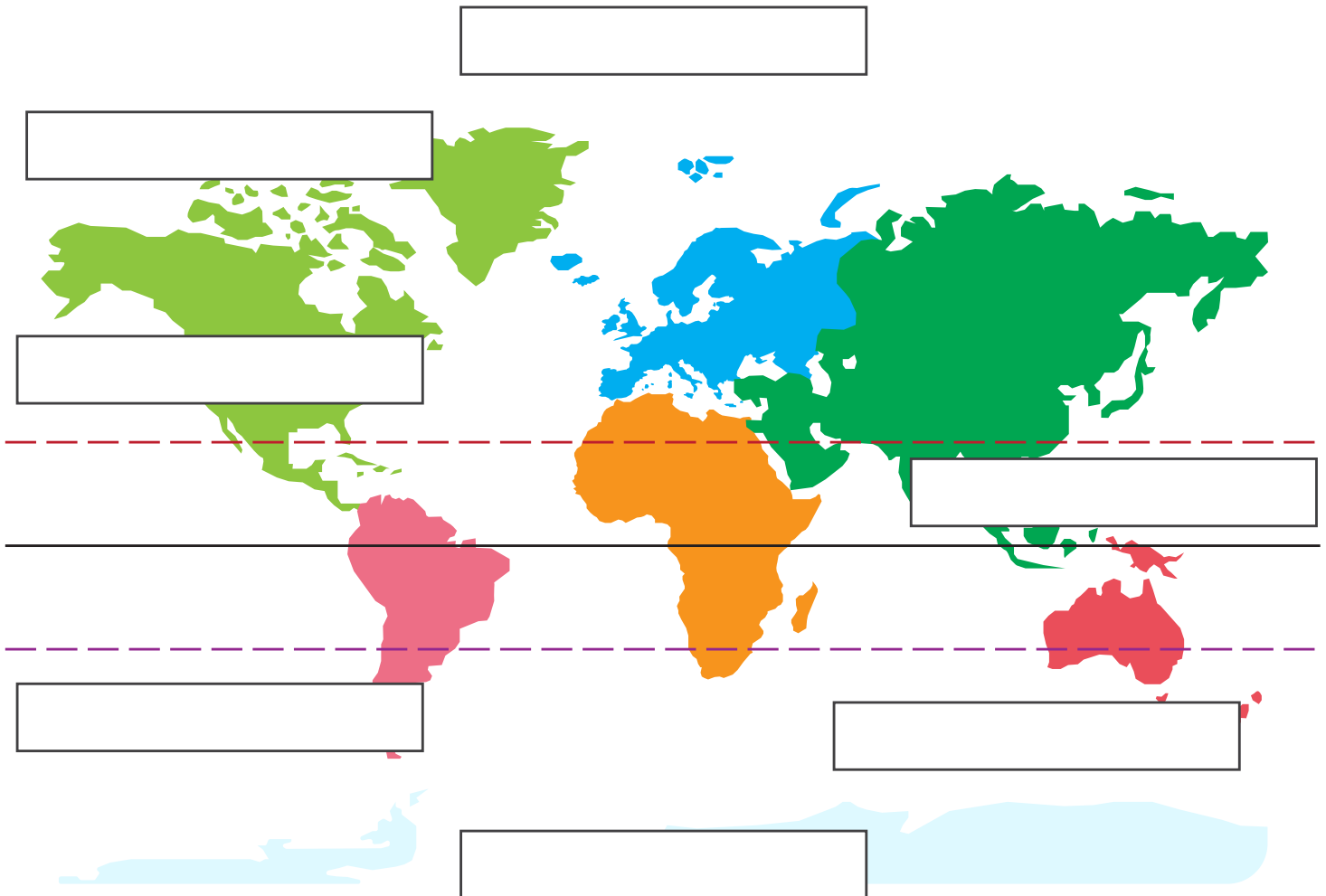
Geography  
Beginner (KS1/2)





# DIVISIONS OF EARTH MAP

Geography  
Beginner (KS1/2)



**Equator   Tropic of Cancer   Tropic of Capricorn**  
**Northern Hemisphere   Southern Hemisphere**  
**North Pole   South Pole**



# HUMAN GEOGRAPHY FLASHCARDS

Geography  
Beginner (KS1/2)







# HUMAN GEOGRAPHY FLASHCARDS

Geography  
Beginner (KS1/2)





# HUMAN GEOGRAPHY FLASHCARDS

Geography  
Beginner (KS1/2)



**city**



**town**



**village**



**farm**





# HUMAN GEOGRAPHY FLASHCARDS

Geography  
Beginner (KS1/2)



**factory**



**port**



**harbour**



# HUMAN GEOGRAPHY WORKSHEET

Geography  
Beginner (KS1/2)

aspect	description
	A <b>city</b> is a place where many ..... live together. It usually has a city ..... with many ..... . People live in the centre and outside of it.
	A <b>town</b> has many people and ..... . It is usually bigger than a ..... but smaller than a .....
	A <b>village</b> is normally in the ..... . It is smaller than a city or town. There are usually a few amenities, like ..... or a doctor's surgery. Most people lived in villages in the ..... .
	A <b>farm</b> is a piece of ..... used for growing ..... or raising animals.



# HUMAN GEOGRAPHY WORKSHEET

Geography  
Beginner (KS1/2)



A **factory** is a place where ..... are made. It can be a ..... or a group of .....



A **port** is a place where ..... can stop on the edge of an ocean or a lake. Ships stop at port to take off ..... or let their ..... off.



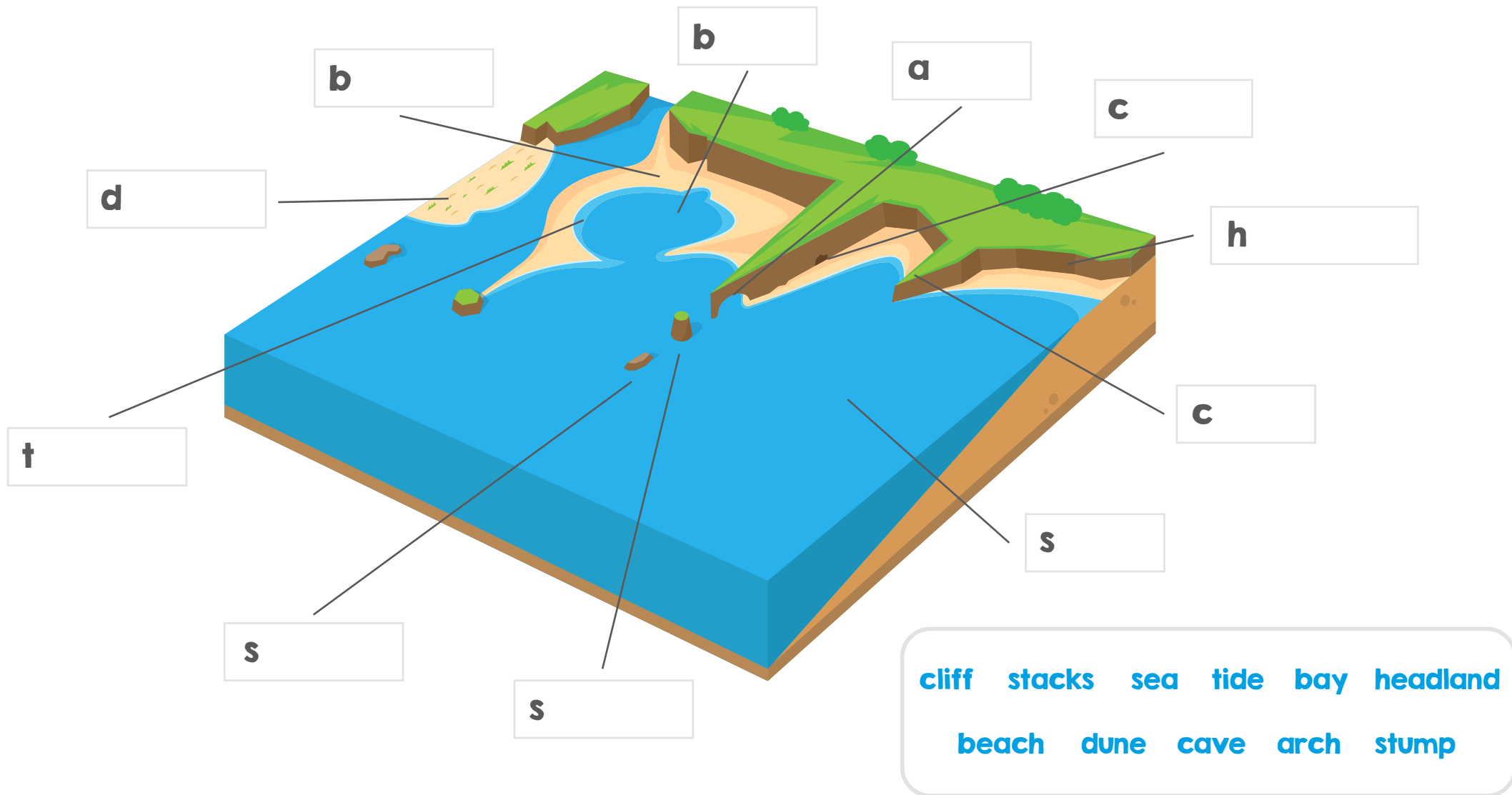
A **harbour** is an area of water next to the coast. A harbour can be ..... or natural. It is a place for boats and ships to .....

shelter    products    businesses    centre    crops  
people    building    passengers    cargo  
buildings    city    village    ships    manmade  
countryside    ocean    past    shops    land



# COASTLINE ACTIVITY

Geography  
Beginner (KS1/2)





# COASTLINE FEATURES - FLASHCARDS

Geography  
Beginner (KS1/2)



**sea stack**



**cliff**



**erosion**



**groynes**



**bay**



**headline**





# COASTLINE FEATURES - FLASHCARDS

Geography  
Beginner (KS1/2)







## COASTLINE FEATURES - FLASHCARDS

Geography  
Beginner (KS1/2)



**This is made from the weathering and the erosion of the coastline rock.**



**This is a column of rock in the sea or near the coast. It is made by wave erosion.**



**When soil and rock are worn away by water or wind.**



**They stop the beach from being swept away by stopping sand being moved too far along the coast.**



**Coastal water that connects to the ocean, a lake or another bay.**



**A section of land that sticks out into the sea.**



## COASTLINE FEATURES - FLASHCARDS

Geography  
Beginner (KS1/2)



**An area of sand or small stones near the sea.**



**A large mound of sand made by the wind.**



**These are made by the erosion of the rock by the sea.**



**This is made by the erosion of the cliff face.**

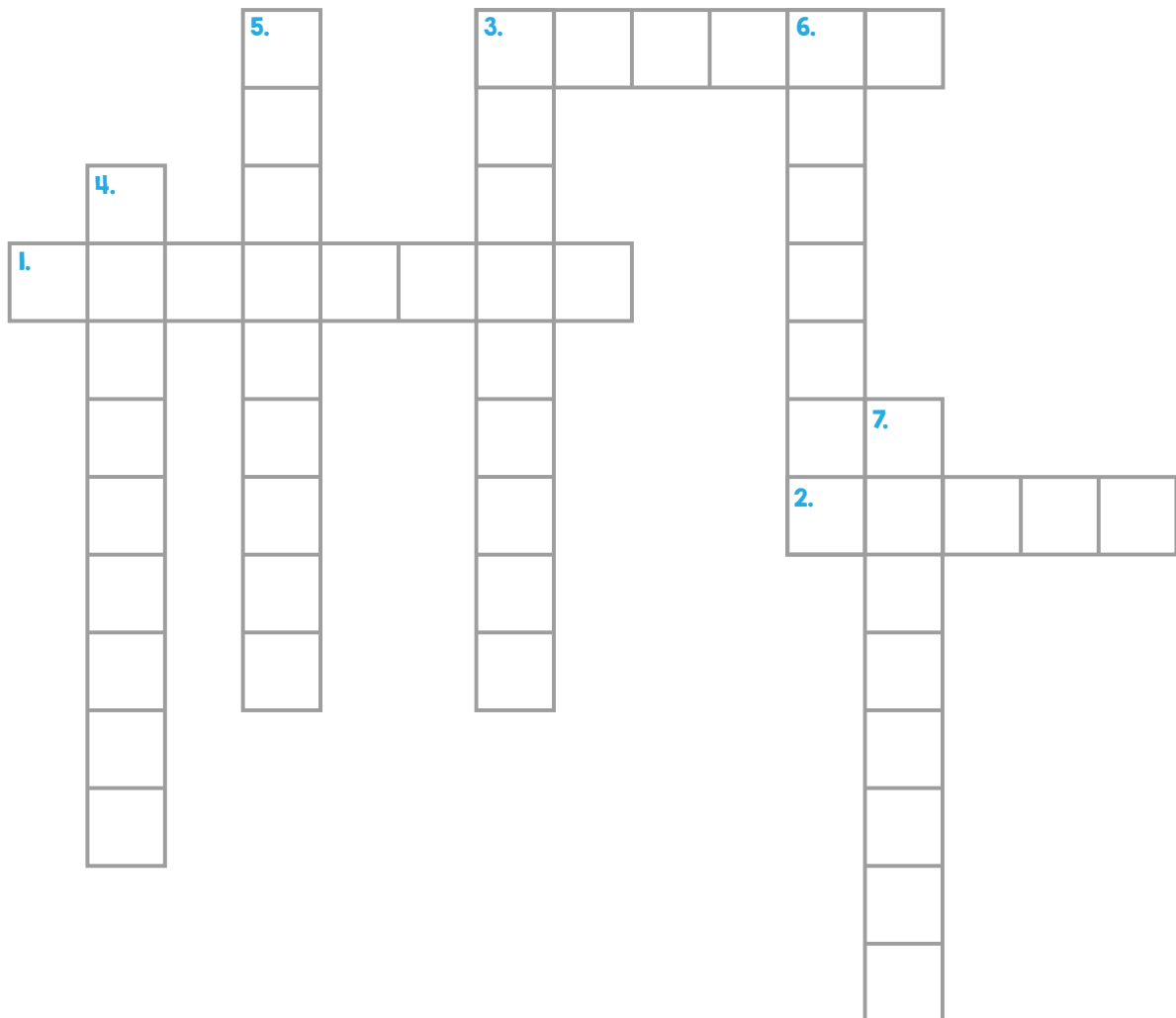


**This is made from the erosion of a sea stack.**



# DIVISIONS OF EARTH CROSSWORD

Geography  
Beginner (KS1/2)



## Across

1. The hemisphere where you would find Australia.
2. The first name of the first person to reach the South Pole.
- 3 The imaginary line in the Northern Hemisphere.

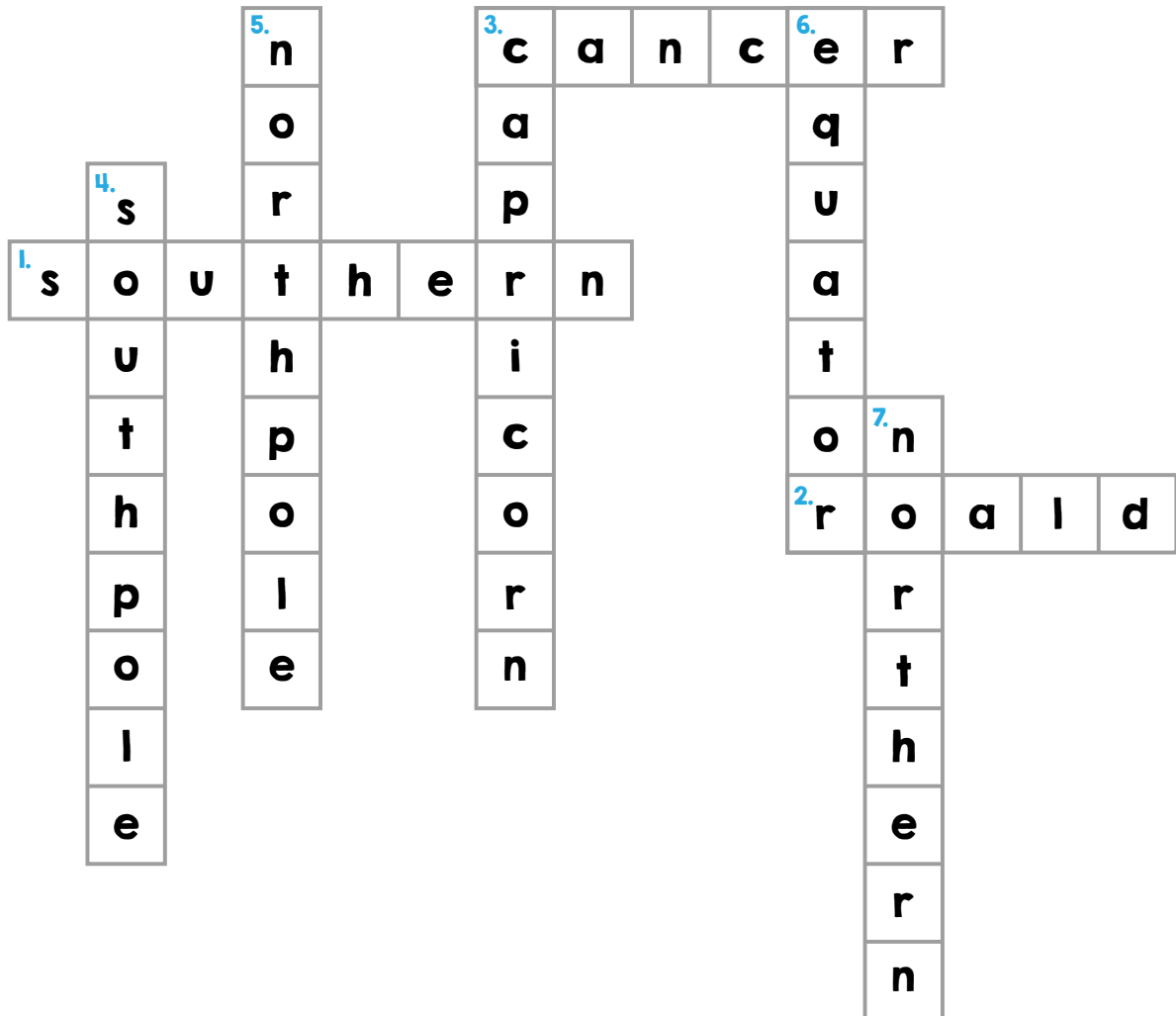
## Down

3. The imaginary line in the Southern Hemisphere.
4. The southernmost point on the Earth.
5. The northernmost point on the Earth.
6. The imaginary line that divides the Earth in half.
7. The hemisphere where you would find North America



# DIVISIONS OF EARTH CROSSWORD (ANSWERS)

Geography  
Beginner (KS1/2)



## Across

- 1. Southern
- 2. Roald
- 3. Cancer

## Down

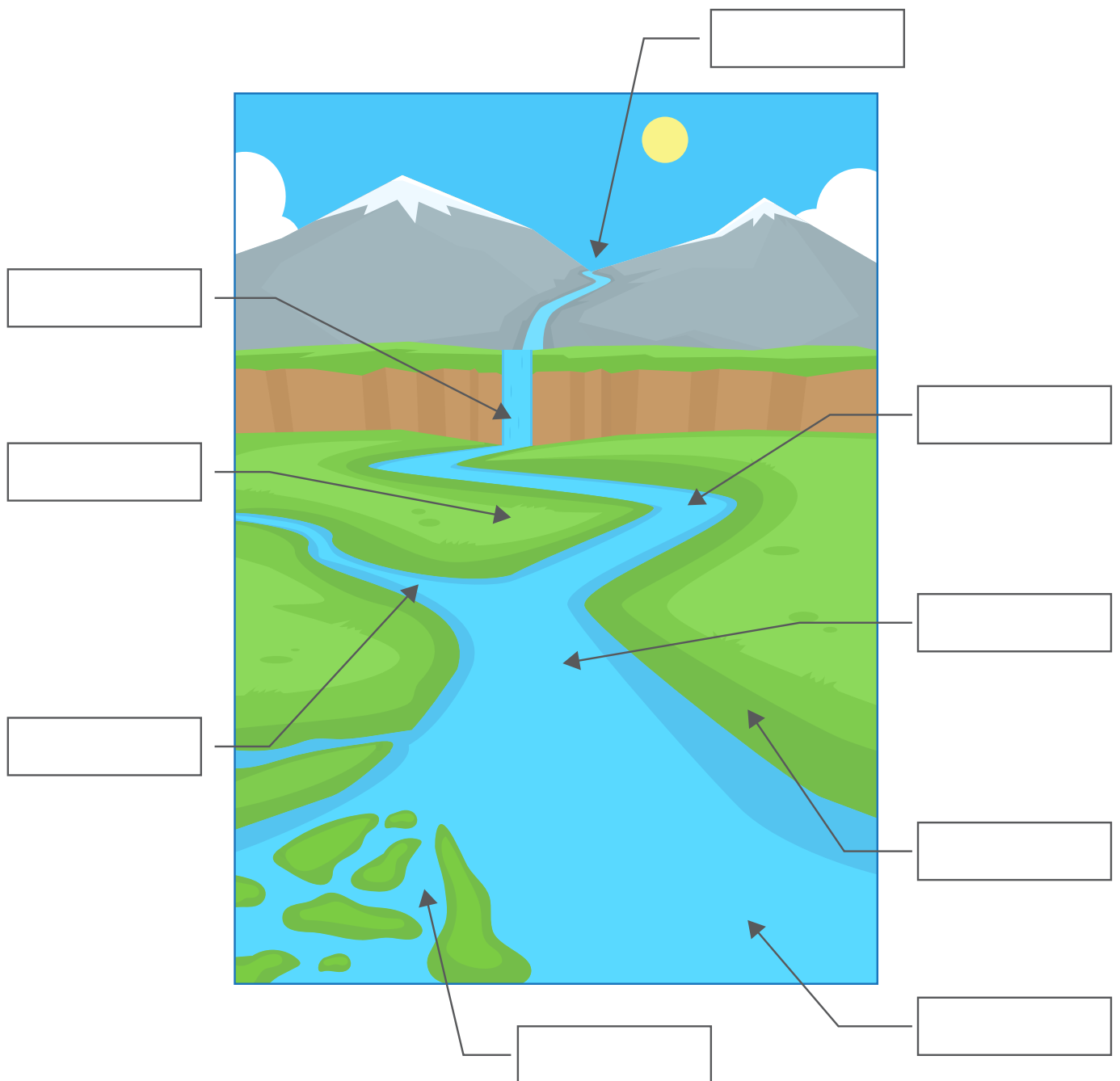
- 3. Capricorn
- 4. South Pole
- 5. North Pole
- 6. Equator
- 7. Northern



# FEATURES OF A RIVER

Geography  
Beginner (KS1/2)

mouth	meander	levee	delta	source
floodplain	channel	waterfall	confluence	





# RIVERS

Geography  
Beginner (KS1/2)



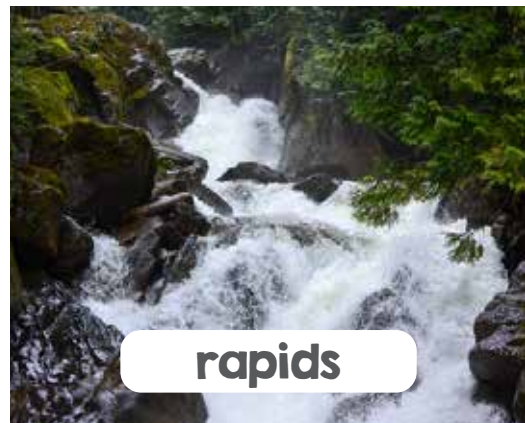
**valley**



**channel**



**waterfall**



**rapids**



**tributary**



**confluence**





# RIVERS

Geography  
Beginner (KS1/2)



**floodplain**



**levee**



**delta**



**estuary**



**meander**



# RIVERS

Geography  
Beginner (KS1/2)



**A long trough in the landscape that has been eroded by a river.**

**A groove in the land that the river flows along.**

**Where water in a river or a stream falls from a height.**

**Fast flowing stretches of water formed where the river surface breaks up into waves because rocks are near the surface.**

**A stream of river that feeds into a larger area of water.**

**The place where two streams or rivers meet.**

**A bend in the river.**

**A flat area of land near to the river banks. This is usually found in the lower course of the river. This area sometimes floods.**

**This is made when a river spreads over a floodplain and builds large deposits of sediment.**

**A fan-shaped area of sediment build-up at the mouth of the river.**

**The place where the fresh river water mixes with the salty sea water, at the mouth of the river.**



# FEATURES OF WORLD OCEANS

Geography  
Beginner (KS1/2)

**Atlantic Ocean**

**Indian Ocean**

**Pacific Ocean**

**Arctic Ocean**

**Southern Ocean**



# FEATURES OF WORLD OCEANS

Geography  
Beginner (KS1/2)



**Great Barrier Reef**



**Named after ancient Greek giant, Atlas**



**Named after the country India**



**Home to emperor penguins**



**Home to polar bears**



**The ocean is covered in ice**





## FEATURES OF WORLD OCEANS

Geography  
Beginner (KS1/2)



**Ring of Fire string of volcanoes**



**Greenland is the largest island**



**Largest breeding place of humpback whales**



**Many icebergs**



**Ice is melting each year.**



**Named “Peaceful Sea” by Ferdinand Magellan in 1521**





# FEATURES OF WORLD OCEANS

Geography  
Beginner (KS1/2)



**London is a big city at the edge of this ocean**



**Home to endangered sea cows**



**Home to the giant squid**



**Home to beluga whales**



**Leif Erikson was the first man from Europe to cross it**



**Coldest ocean in the world**







# FEATURES OF WORLD OCEANS (ANSWER SHEET)

Geography  
Beginner (KS1/2)

## Pacific Ocean

- Great Barrier Reef
- Ring of Fire – string of volcanoes
- Named “Peaceful Sea” by Portuguese explorer, Ferdinand Magellan in 1521

## Atlantic Ocean

- Named after the Ancient Greek giant, Atlas
- Greenland is the largest island
- London is a big city at the edge of this ocean
- Leif Erikson was the first man from Europe to cross it

## Indian Ocean

- Named after the country India
- Largest breeding place of humpback whales
- Home to endangered sea cows

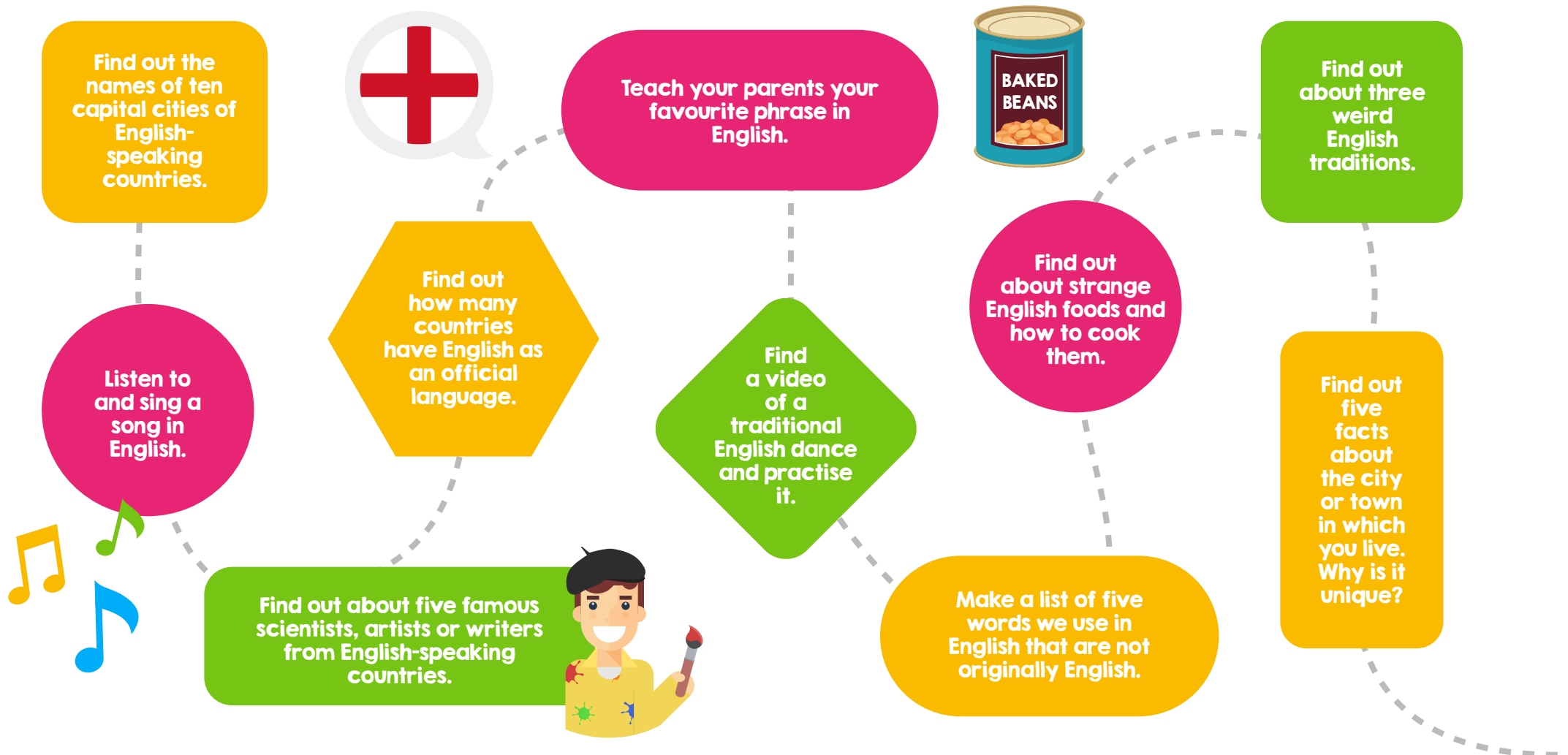
## Southern Ocean (also known as the Antarctic Ocean)

- Home to emperor penguins
- Coldest ocean in the world
- Many icebergs
- Home to the giant squid

## Arctic Ocean

- The ocean is covered in ice
- Home to polar bears
- Home to beluga whales
- Ice is melting each year

## CHALLENGES!



## CHALLENGES!



Learn the rules of a sport played in England and make a video explaining them.

Find out about four products that were invented in the UK.

Plan the most exciting school trip you can imagine.



What is the difference between the United Kingdom, Great Britain and England?

What's the longest word you can find in English? Can you say it?

How many words can you make using the letters in 'United Kingdom'? For example, 'go' or 'not'.

What are the national flowers of the countries which make up the United Kingdom?



There are many different accents found around the UK. Find three words that are only used in your region of the UK.

What are the 3 biggest cities in the UK? Find out how many people live in each one. How many people live in your town or city?

Find a short poem you like in English. Practise reading it aloud. Can you memorise it?

