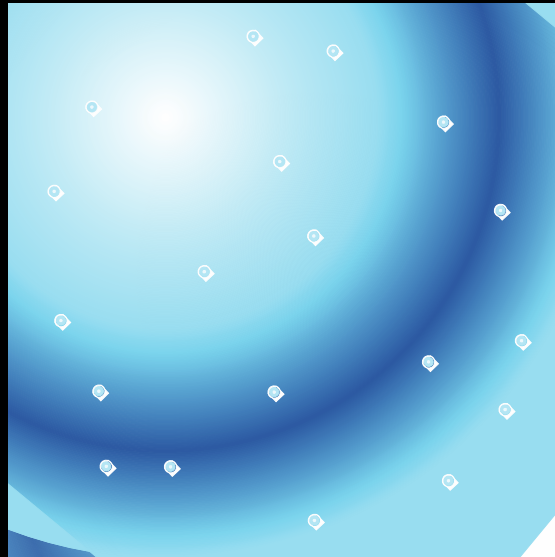


Standards for Knowledge Graphs & Networks



Ram D. Sriram, Ph.D.
Chief, Software and Systems Division
Information Technology Laboratory
National Institute of Standards and
Technology

Generic Information Modeling Requirements

- Model construction
- Representation across scales
- Broad accommodation for multiple formalisms
- Separation of domain-specific concerns
- Integration and aggregation across models
- Model evolution
- Flexibility and modularity
- Scalability

KGs and KNs

- The summit discussed many approaches to knowledge graphs and networks
- The field is reasonably mature as can be seen by use in the industry (Google, etc..)
- A standard representation will aid in increased use
- It will also lead to formal knowledge repositories in number of domains
- Could be developed in a layered manner

Questions for Today's Panelists

- Are we ready for standards?
- What is the current state of the art?
- What should the future be?
- What are the roles for various organizations?

Panelists

- **John Sowa**, Fellow - Kyndi Inc
 - *Knowledge Graphs & Logic*
- **Elisa Kendall**, Thematix
 - *OMG Efforts Toward Developing Standards for KGs*
- **Mike Bennett**, Hypercube Ltd (UK)
 - *Standards for KGs in the Financial Sector*
- **Andras Blumauer**, Semantic Web Company (Austria & US)
 - *The Semantic Web and Standards for KGs*